

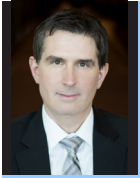
PENN STATE HARRISBURG
ACADEMIC AND ADMINISTRATIVE LEADERSHIP



Chancellor and Dean
Dr. John M. Mason Jr.

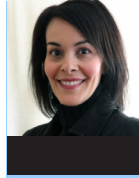


Academic Affairs
Dr. Omid Ansary
Senior Associate Dean for Academic Affairs and Administration



Administrative Services
Todd H. Camp
Executive Director

Also serves within the Office of the Vice President for Commonwealth Campuses.



International Programs, External Relations, Special Events and Projects
Marie-Louise Abram
Director



Academic Affairs
Dr. Holly L. Angelique
Assistant Dean

Academic Schools



School of Behavioral Sciences and Education
Dr. Mark Kiselica
Director



Development and Alumni Relations
Noah J. Roufos-Abbey
Director



Research and Outreach
Dr. Vahid Motevalli
Interim Associate Vice Chancellor for Research and Outreach



Graduate Studies
Dr. Peter B. Idowu
Assistant Dean



School of Business Administration
Dr. Angappa Gunasekaran
Director



Diversity, Equity, and Inclusion
Dr. Wanda B. Knight
Assistant Dean



Student Affairs
Dr. Todd Clark
Senior Director



School of Humanities
Dr. Jeffrey P. Beck
Director



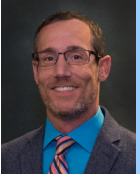
Finance
Jay P. Spiegel
Financial Manager



Strategic Communications
Yvonne Harhigh
Director



School of Public Affairs
Dr. Marvin Overby
Director



Human Resources
David A. Beardsley
Regional Strategic Partner



School of Science, Engineering, and Technology
Dr. Vahid Motevalli
Director



Intercollegiate Athletics, Recreation
Rahsaan Carlton
Director



Library
Dr. Glenn S. McGuigan
Director and Head Librarian

Academic Affairs

Dr. Omid Ansary
Senior Associate Dean for Academic
Affairs and Administration

Dr. Holly L. Angelique
Assistant Dean, Academic Affairs

Admissions

Robert W. Coffman Jr.
Director, Enrollment Management

Academic Support and Advising Services

Daniel Mercado
Director

Information Technology Services

Gary Barb
Interim Campus Technology Officer

Honors Program

Dr. Gina Brelsford
Director

Office of the Registrar

Paula C. Maynard
Campus Registrar

Center for Teaching Excellence

Dr. Laura Ramp
Director

Intercollegiate Athletics/ Recreation

Rahsaan Carlton
Athletic Director

Scott Duncan
Associate Athletic Director

Recreation/Aquatics

Craig Merkey
Associate Director

Sports Information

Tom Klemick
Director

International Programs, External Relations, Special Events and Projects

Marie-Louise Abram
Director

Board of Advisers

Governmental Relations

Mukund S. Kulkarni Theatre

Teri Guerrisi
Arts Manager

Matthew Mitra
Production Manager/Technical
Director

Special Events

Panna Idowu
Manager

Administrative Services

Todd H. Camp
Executive Director

Buildings, Maintenance and Construction

Vacant

Janitorial

Clark Showalter
Supervisor

Grounds, Fleet and Mail

Mike Roth
Manager

Utilities/HVAC, Renovation/Maintenance

Dan Barlup
Supervisor

Development and Alumni Relations

Noah J. Roufos-Abbey
Director

Alumni Relations

Megan Bennett
Interim Associate Director

Faculty Senate

Dr. J. Brian Adams
President

Housing and Food Services

Craig A. Cook
Director

Research and Outreach

Dr. Vahid Motevalli
Interim Associate Vice Chancellor for Research and Outreach

Continuing Education

Abby Peslis
Director

Research Development and Administration

Alicia Wondoloski
Director

Institute of State and Regional Affairs

Dr. Philip M. Sirinides
Director

Pennsylvania Recycling Markets Center

Robert J. Bylone, Jr.
Executive Director

University Police and Public Safety

Lt. Juan Castro Jr.
Harrisburg Station Commander
Professional Standards Lieutenant

Staff Advisory Council

Adam Drake
Chair

Strategic Communications

Yvonne Harhigh
Director

Student Affairs

Dr. Todd Clark
Senior Director

Career Services

Marcela Service Manzo
Assistant Director

Student Diversity, Equity, and Inclusion

Evan Williams
Assistant Director

Counseling and Disability Resources

Dr. Eileen Haase
Director

Student Engagement

Michelle Weber-Colón
Assistant Director

International Student Programs

Dr. Charles Lord
Assistant Director

Student Health Services

Dawn Schott
Assistant Director

Student Care and Advocacy/ Residence Life

Kelly Weaber
Interim Assistant Director