



PennState
Harrisburg

WE ARE

Penn State Harrisburg

The College

Penn State Harrisburg is the largest and most comprehensive of Penn State's Commonwealth Campuses. The college offers more than 75 academic programs and is the only campus, along with University Park, to offer degrees from the associate to doctoral levels.

Originally serving only upper division and graduate students, Penn State Harrisburg became a four-year college in 2004.

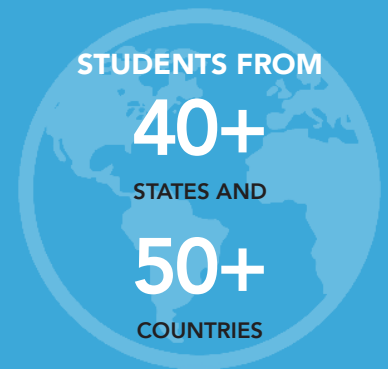
The college provides student access to higher education from three distinct entry points – first year, transfer, and graduate – and our history has allowed the college to develop expertise in serving transfer students.

Penn State Harrisburg ensures high standards across our programs, holding accreditation for all programs with an eligible national accrediting body, from engineering, public administration and business programs, to education and applied behavioral analysis programs.

These accreditations underscore Penn State Harrisburg's commitment to delivering quality education that meets rigorous professional standards.

A pioneer of online education, Penn State Harrisburg currently offers several undergraduate and graduate programs via Penn State's World Campus, and several in partnership with other Penn State colleges, as well as numerous online and hybrid courses.

The college has five schools: Behavioral Sciences and Education; Business Administration; Humanities; Public Affairs; and Science, Engineering, and Technology.



SCHOLARSHIPS AVAILABLE

About 80% of students receive some financial aid



STUDENTS IN
ON-CAMPUS
HOUSING
+ MORE OFF-CAMPUS
HOUSING LOCALLY

\$198.5
MILLION
CONTRIBUTED TO
PENNSYLVANIA
ECONOMY



harrisburg.psu.edu

NEARLY
5,000
STUDENTS

STUDENT HOUSING

On-campus housing for more than 700 students including single-, double-, or triple-occupancy apartment-style housing; double occupancy suite-style housing for first-year students; and single occupancy apartment-style housing for upper division students (second-year students and above).

A variety of off-campus housing options also are available in the surrounding community. Located within a short commute to campus, the area offers options that provide the convenience of proximity and the amenities students need to feel at home, allowing students to find accommodations that support their academic and social lives.



DEGREE PROGRAMS

Penn State offers more than 75 academic programs across the associate, undergraduate, graduate and doctoral levels, as well as more than a dozen accelerated programs.

For a full list of programs, visit harrisburg.psu.edu/academics



Centers and Institutes

- Capital Area Institute for Mathematics and Science
- Center for Holocaust and Jewish Studies
- Center for Innovation and Entrepreneurship
- Center for Signal Integrity
- Central Pennsylvania Research and Teaching Laboratory for Biofuels
- Douglas W. Pollock Center for Addiction Outreach and Research
- Harrisburg LaunchBox
- Inclusive Excellence Center
- Institute of State and Regional Affairs
 - Center for Survey Research • Information Technology Center • Pennsylvania Center for Latino Research • Pennsylvania State Data Center
- Pennsylvania Center for Folklore
- Recycling Markets Center
- Smart Home Research Initiative

ATHLETICS



**NCAA Division III
athletic teams
+ Club Teams &
Intramurals**



Library

The three-story, 115,000-square-foot, technologically advanced academic research library includes more than 300,000 volumes and 400 journals. With access to more than 750 databases and over 110,000 online full-text journals through the University Libraries, the facility provides extensive support to resident and online users.

~70 clubs and organizations

